
Installation

Travel Works for Windows®

By Pcvoyages 2000, Inc.

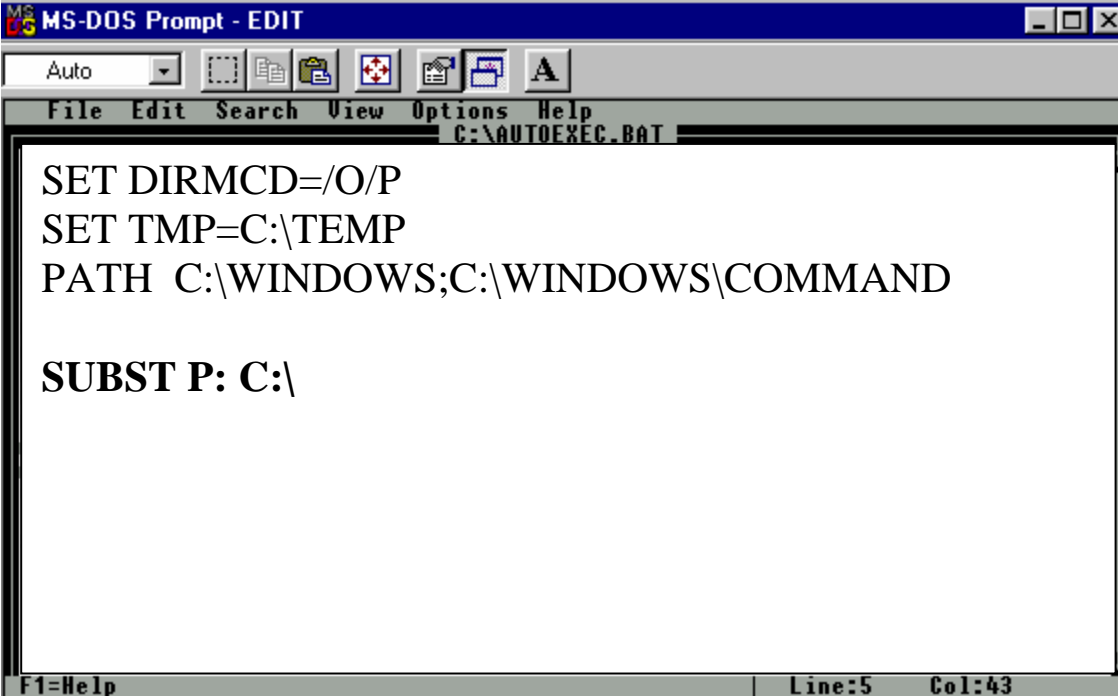


Stand Alone	3
Network Installation Windows 9X (server)	5
NT, XP, 2000, 2003 Server installation SQL version Server and client	9
Regional settings	11
Number	11
Currency	12
Date.....	13
Installation CRS interface	14
Setting up the Sabre Interface	15
In a Sabre environment.....	15
File on disk configuration Sabre	16
Sabre Printing Module configuration (File on disk)	17
Galileo	21
Focal point on the Net setting (see interfac32.doc).....	21
Hardware Requirement	22

Stand Alone

For Stand Alone configuration (1 computer only)

- 1- At the MS-DOS command prompt
- 2- CD \ ◀ enter
- 3- EDIT **autoexec.bat** ◀ enter
Modify the file by adding **SUBST P: C:** to the last line and save it.



```
MS-DOS Prompt - EDIT
Auto
File Edit Search View Options Help
C:\AUTOEXEC.BAT
SET DIRMCD=/O/P
SET TMP=C:\TEMP
PATH C:\WINDOWS;C:\WINDOWS\COMMAND

SUBST P: C:\

F1=Help | Line:5 Col:43
```

- 4- Restart the computer.
- 5- Close all other applications such as Microsoft Office, Norton Antivirus Etc...
- 6- Click the **Start** button and go to **Run..**

- 7- Type D:install where D: is your CD-ROM Drive and click Ok
- 8- Click the start button and go to Run..
- 9- Type **D:install.exe** where D: is your CD-ROM Drive and click on Ok

For agency equipped with CRS Interface select Yes when prompted to Install the icons.

* * * **Warning** * * *

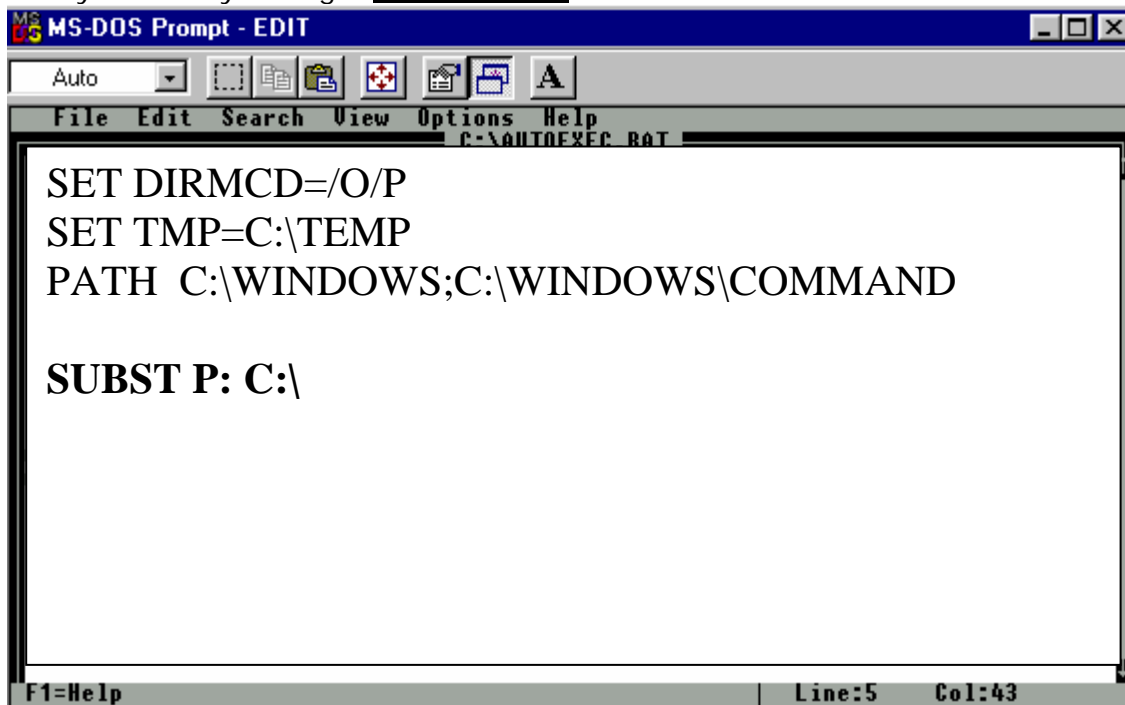
*** The installation program may need to restart the computer 2 or 3 times because of some DLL might be in use by other applications. Simply restart the computer the installation programs should resume automatically. It will repeat it until completion. You must quit all applications. To do that you need to Press the Ctrl+Add+Del. In the **Close Program** dialog box, click on the program that you want to quit and then Click End Task. You should keep only the **Explorer** running.

Network Installation Windows 9X (server)

For Network peer to peer Windows 95 or 98 Configuration

One of the computers will be the File Server.

- 1- On the File Server At the MS-DOS prompt
- 2- CD \ ↵ enter
- 3- EDIT Autoexec.bat ↵ enter
Modify the file by adding **SUBST P: C:** to the last line and save it.



```
MS-DOS Prompt - EDIT
Auto
File Edit Search View Options Help
C:\AUTOEXEC.BAT
SET DIRMCD=/O/P
SET TMP=C:\TEMP
PATH C:\WINDOWS;C:\WINDOWS\COMMAND
SUBST P: C:\
F1=Help | Line:5 Col:43
```

- 4- Restart the computer.

- 5- Close all other applications such as Microsoft Office, Excel, Etc...
- 6- Click the start button and go to Run..
- 7-Click the start button and go to Run..
- 8-Type **D:\install.exe** where D: is your CD-ROM Drive and click on Ok

For agency equipped with CRS Interface select Yes when prompted.

*** Warning ***

*** The installation program may need to restart the computer 2 or 3 times because of some DLL might be in use by other applications. Simply restart the computer the installation programs should resume automatically. It will repeat it until completion. You must close all applications.

Network Configuration Workstations

- 1- Map a Network drive to the Server The Drive must be **P:**
To assign (map) a drive letter to a network computer or folder
 1. Click **Start**, point to **Programs**, and then click **Windows Explorer**.
 2. On the **Tools** menu, click **Map Network Drive**.
 3. In **Path**, type the path you want. For example:
\\Server\c
If a password is required, Windows prompts you.

Notes

- You can also right-click **My Computer** or **Network Neighborhood**, and then click **Map Network Drive**.
- To map to a computer or folder you've used recently, click the arrow to the right of **Path**, and then click the resource you want.
- 2- Close all other applications such as Microsoft Office, Norton Antivirus Etc...
- 3- Click the start button and go to **Run**
- 4- Type **D:INSTALL.EXE** where D: is your CD-ROM Drive and click on Ok

Follow the instructions on the screen.

For agency equipped with CRS Interface select Yes when prompted.

*** Warning ***

*** The installation program may need to restart the computer 2 or 3 times because of some DLL might be in use by other applications. Simply restart the computer the installation programs should resume automatically. It will repeat it until completion. You must close all applications.

NT, XP, 2000, 2003 Server installation SQL version Server and client

Install the TravelWorks SQL software from the CD onto the server. You must first create a share folder and map it as a P: drive on server. Then install the client and the server software on the server then the install the application on the client computer. **(This is usually done by TravelWorks technical support person)**

To install on the server

Step 1: Create a share folder name it **PCVOYAGES** then map it as a P: drive.

Step 2: Install the SQL server software MSDE or MsSQL server 2000

Step 3 Install TravelWorks SQL component from CD InstallserverSQL500.exe

Step 4: Create the database with the database creation software DTS.exe from CD

Step 5: Install the client application on the server

In the shared folder already created go to the PCV folder

Then click on the install folder then click on the install workstation folder

Select the language English or French client then click on installstation.exe

Step 6: Adjust the regional setting (as page 11 and 12)

Step 7: Restart the server

To Install on the client workstation

Step 1: map a P: drive to the already created share folder on the server

Step 2: go to the Pcv folder the go to install workstation folder

Step 3: select the language English or French client then click on installstation.exe

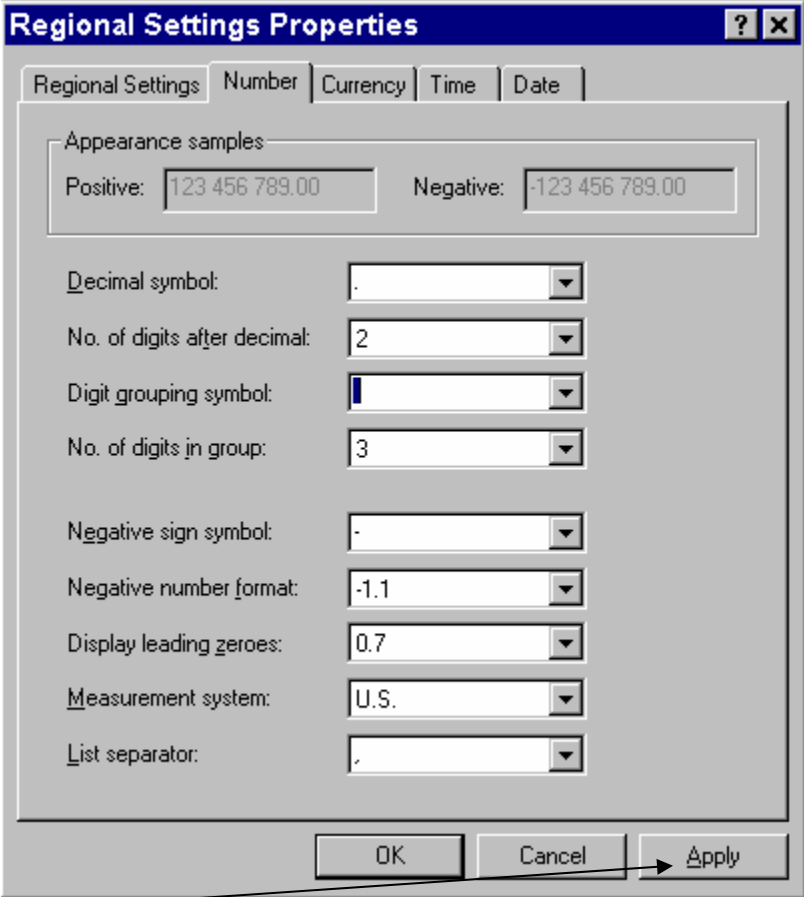
Step 4: Adjust the regional setting (as page 11 and 12)

Step 5: Restart the workstation

Regional settings

Number

The regional settings must be reactivated in order to work properly with the TravelWorks 2.3 software. Some settings may appear to be correct but in fact they are not so the need the reconfirm the settings by activating the apply button on the Number, Currency and Date Tab. You must Restart the computer after completion of the reactivation of the settings.



You must hit the Apply button to register the changes or simply reconfirm it by changing a setting and put it back to its original setting.

To ensure proper usage of the software you must verify and reconfirm that every computer has these settings. Also make sure that the Apply button is turned on.

Currency

Regional Settings Properties [?] [X]

Regional Settings | Number | **Currency** | Time | Date

Appearance samples:
Positive: \$123 456 789-000 Negative: (\$123 456 789-000)

¤ = Universal currency symbol

Currency symbol: \$

Position of currency symbol: ¤1.1

Negative number format: (¤1.1)

Decimal symbol: -

No. of digits after decimal: 5

Digit grouping symbol: |

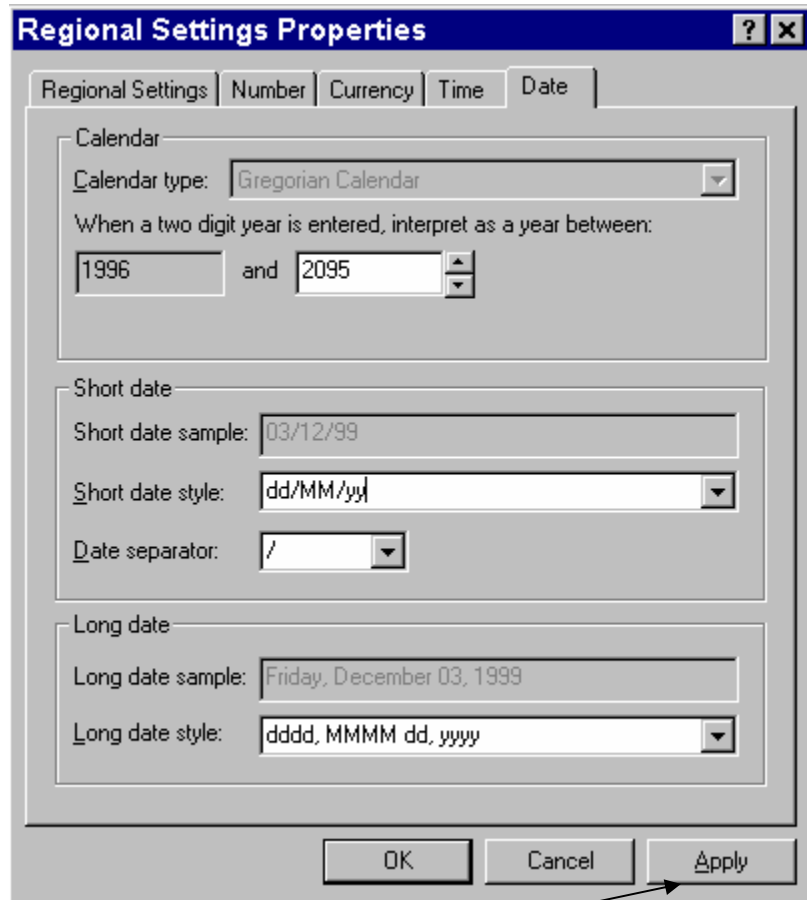
Number of digits in group: 3

OK Cancel **Apply**

You must hit the Apply button to register the changes or simply reconfirm it by changing a setting and put it back to its original setting.

To ensure proper usage of the software you must verify and reconfirm that every computer has these settings. Also make sure that the Apply button is turned on.

Date



You must hit the Apply button to register the changes or simply reconfirm it by changing a setting and put it back to its original setting.

To ensure proper usage of the software you must verify and reconfirm that every computer has these settings. Also make sure that the Apply button is turned on.

Installation CRS interface

The installation program of the CRS interface is part of the complete TravelWorks installation CD-ROM. Please follow the instructions from the install CD. When prompted say Yes to Install Interface icons.

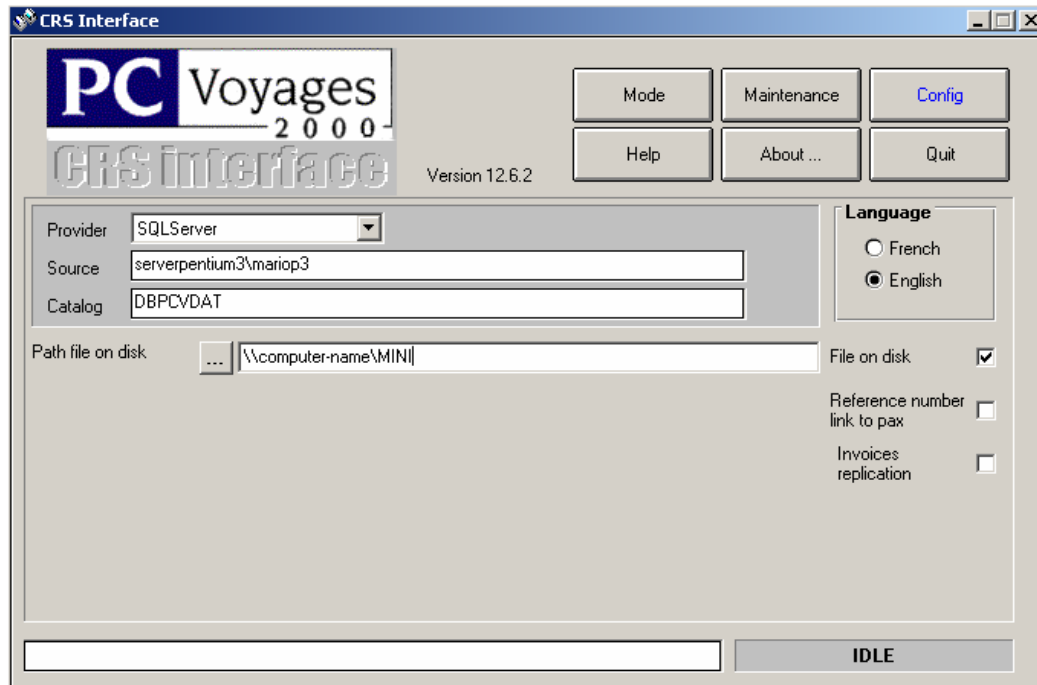
- 1- Select a computer to be the receiving workstation
 - 2- Insert the CD into the Drive
 - 3- Double click on **InterfaceCrs.exe** from My Computer folder by selecting the CD icon or Hit the Start button then Run and Type in the Open Box field the command **D:InterfaceCrs.exe** where is D: is your CD Drive.
 - 4- Choose the language to perform the installation
 - 5- Wait for end of install message
-

Setting up the Sabre Interface



In a Sabre environment you need to be configured as an Option 6 IUR accounting Interface. The TRAVEL WORKS interface works in conjunction with the Sabre Printing Module. It is like adding a printer to the computer. You must get from Sabre a TA address for the interface.

File on disk configuration Sabre



In TravelWorks interface config tab select file on disk. Enter the Sabre computer name where the Sabre printing module is installed and configured to be the interface device and enter the folder name where the messages will be downloaded from Sabre. Ex. [\\station1\mini](#)

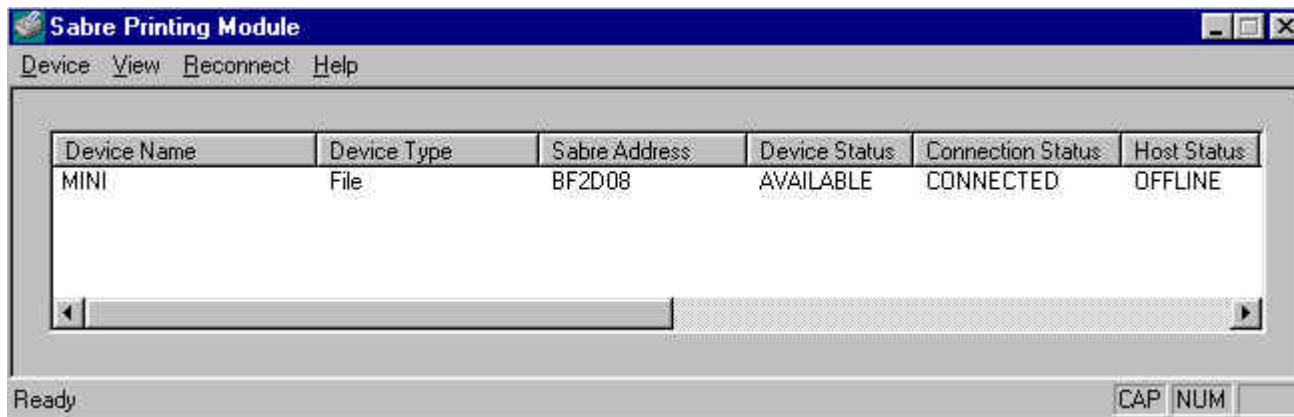
Sabre Printing Module configuration (File on disk)

Step 1

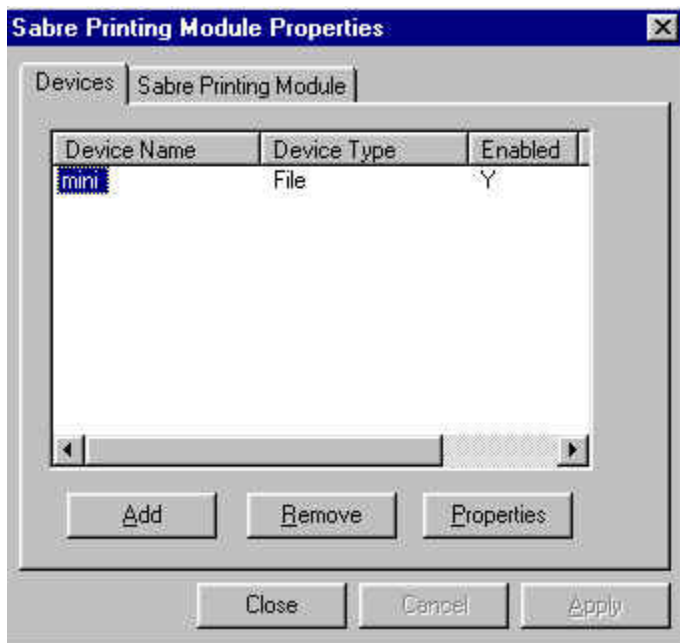
Double Click on Sabre Printing Module from the Windows task bar.



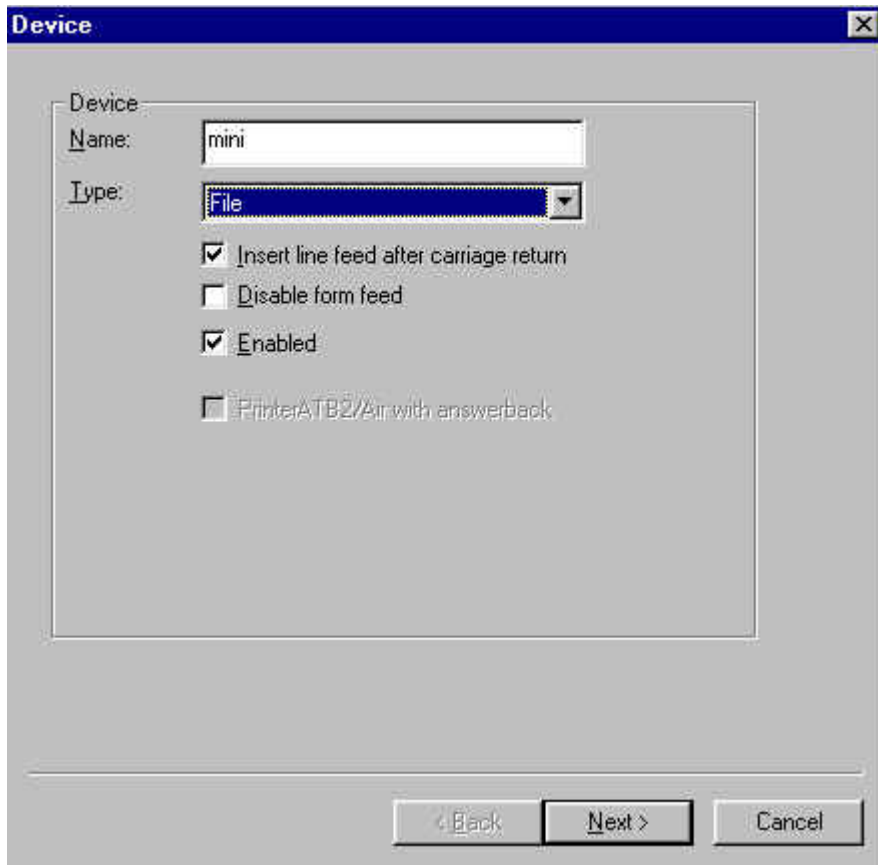
Step 2 Select or Add the interface device. To edit the device double click on it. To add select device and select Properties.



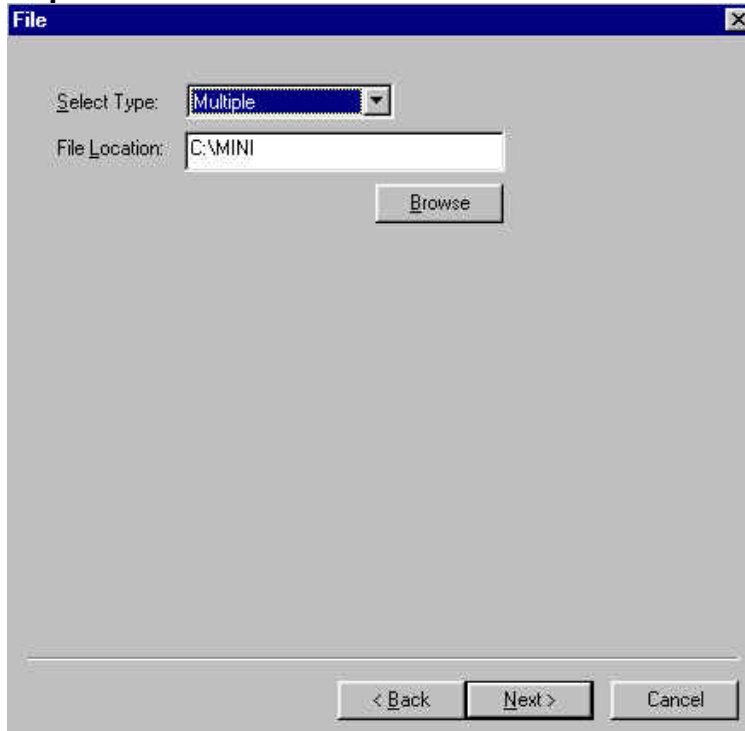
Step 3 click on Properties.



Step 4 select File from the list box. And click on the Next button



Step 5 Enter the file location and click on the Next button.

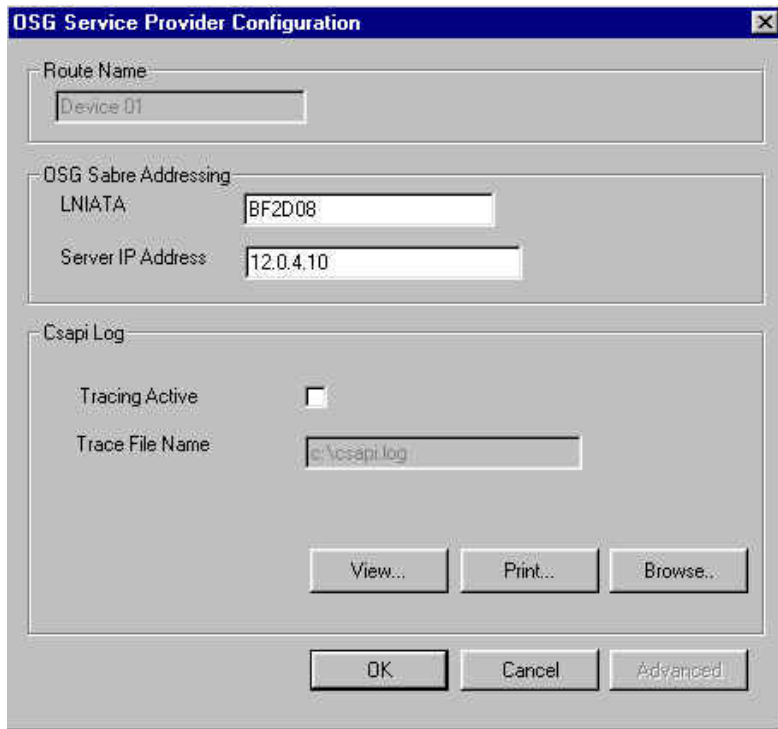


Step 6 Select Increment by 001 and click on the Next button.

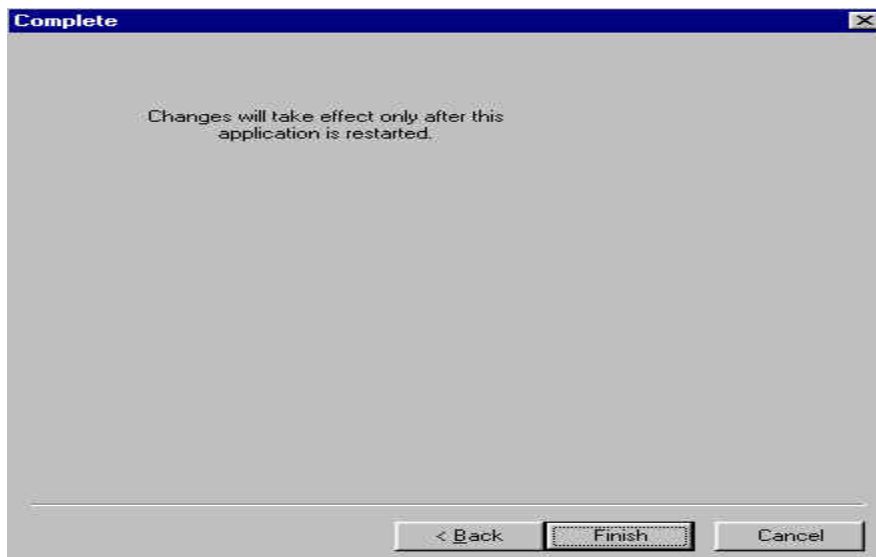
The image shows a dialog box titled "Multiple File" with a close button in the top right corner. The dialog contains the following fields and controls:

- File Name:** A text input field containing "0ADP".
- File Extension:** A section containing two radio buttons:
 - Increment by 001
 - Time Stamped
- Maximum Files:** A text input field containing "999".
- Maximum File Size:** A text input field containing "1024000".
- Navigation:** Three buttons at the bottom: "< Back", "Next >", and "Cancel".

Step 7 edit the OSG service provider configuration. Enter the Sabre server ip address and click on OK. And Click on Next (depends on the connection with Sabre) you may check other Sabre Printing module printer settings it should match with these settings.



Step 8 Click on Finish close and restart the printing module.



Galileo

For Galileo interface setting refer to Sabre COM port setting. They are identical. The difference is, with Galileo there is no sender computer. You must connect from the multi ports device attached to the Galileo gateway into the third port or into the Galileo Procon into the B port.

Focal point on the Net setting (see interfac32.doc)

The setting is different than the regular Focal point and Procon settings. You will configure it by using the DPS Config module. You may use the MIR on Disk option avoiding the use of connectors and cable. You will specify the folder where to save the Mir. You must use P:\interfac\ folder. If you still want to use a cable connection you must use the regular port specification such as 4800,E,7,1 Hardware as flow control.

Hardware Requirement

Single user Hardware requirements

WORKSTATION

IBM Pc or 100% Compatible
 Pentium IV CPU or better
 256Mb of Ram or more
 Windows 95,98,NT Workstation, Windows 2000™, XP
 Hard disk 100mb needed for installation
 SVGA Color monitor 800x600(recommended)
 Laser, Inkjet, and dot matrix printer
 Modem 56K USR and PC-anywhere Host 7.5 or higher
 Tape backup or zip drive (optional) but recommended
 MSDE Included on the install CD



Our Technology

At Pcvoyages 2000 Inc. we use Microsoft Visual Basic language the sixth version of its award-winning development tool, more than 50 percent of all professional developers are using the Visual Basic language. Visual Basic 6.0 and Microsoft .net are the most productive tool for creating high-performance enterprise and Web-based applications. Integrated Visual Database Tools and a RAD environment, promote productivity while native code compilation provides fast applications.

Also at Pcvoyages 2000 Inc we use the Microsoft® SQL Server™ 2000 and 7.0 technology, a family of products that meet the data storage and analysis requirements of the largest data processing systems and commercial Web sites. The same products can provide easy-to-use data storage and analysis services to an individual or small business.

Multi-users Hardware requirements

SERVER

IBM Pc or 100% Compatible
 Pentium IV CPU or better
 1Gb of Ram or more
 Windows NT 4.0, Windows 2000(3)™ Server or XP
 Hard disk 20Gb (SCSI drive suggested)
 Fast Ethernet LAN 100
 SVGA Color monitor 800x600(recommended)
 Microsoft SQL Server 2000 (5 users or more)
 Microsoft Frameworks 1.1
 Tape backup or zip drive (optional) but recommended
 MSDE Included on the install CD (5 users or less)



WORKSTATION

IBM Pc or 100% Compatible
 Pentium 3 CPU or better
 256Mb of Ram or more
 Network card Ethernet 100Mb
 Windows 95,98,NT Workstation, Windows 2000™, XP
 Hard disk 100mb needed for installation
 SVGA Color monitor 800x600(recommended)
 Laser, Inkjet, and Dot Matrix printer

